



HELLO AND WELCOME!

Welcome to today's exhibition event!
We hope you are well!



We are here today to build on the vision for the future Juniper Crescent with you.

Following the last event in September 2023, where we explored many aspects of the evolved masterplan; today we will present your feedback and more detailed information on home layouts and the landscape and open spaces.

The updated programme on Banner 6 presents our next events, please come along and get involved!

WHAT WILL BE DISCUSSED AT TODAY'S EVENT?



Your key priorities and feedback from previous events



The shared vision



Your new open spaces



Home layouts



How to get involved and future events



Next steps

PLEASE
COME ALONG
AND GET
INVOLVED!

MEET THE TEAM...

ONE HOUSING (part of Riverside)
Registered Housing Provider

A housing association and not-for-profit organisation with a strong social purpose. One Housing is a part of Riverside Group Limited and offers a wide range of housing options including homes for social rent in partnership with local authorities.

COUNTRYSIDE
Development Partner

UK's leading mixed-tenure developer, bringing together modern and efficient delivery methods to create sustainable communities where people love to live.

PRP
Architecture, Masterplanning & Landscape Architecture

Design led team with 60 years experience in community led housing regeneration developments in the UK and across London.

CONNECT
Public and Stakeholder Engagement

Community and stakeholder consultation experts to deliver our wider public and stakeholder engagement.

COMMUNITIES FIRST
Independent Tenant Advisor (ITA)

Selected by tenants representatives at the start of the redevelopment process to help improve discussions between residents and One Housing, and provide confidential advice and support tenants.



JUNIPER CRESCENT

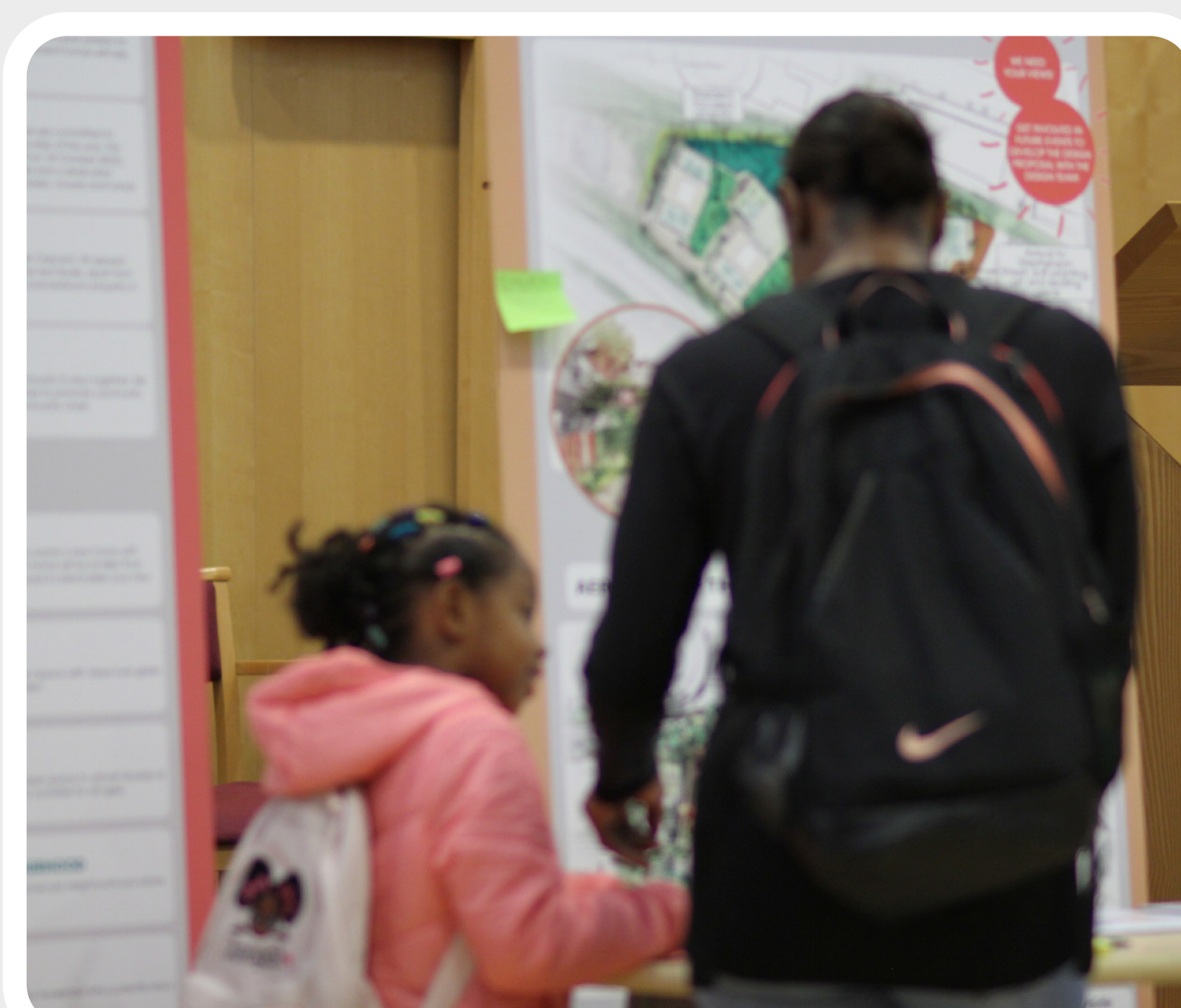


YOUR VIEWS

THE COLLABORATIVE JOURNEY

Following the last workshop events in July 2023, where residents had the opportunity to **actively discuss with the design team the initial design principles** of the proposal for Juniper Crescent, we invited residents to attend Exhibition Events in September 2023.

The purpose of the **'September Exhibition Events'** was to provide residents the opportunity to discuss with the design team the **design evolution of the masterplan for Juniper Crescent and provide their feedback**. In addition to setting out the next steps in the process, moving and rehousing support, future events and how residents can get involved in this journey.



FEEDBACK FROM THE SEPTEMBER EXHIBITION EVENTS

YOUR KEY PRIORITIES



Service charges



Building heights and stepped massing



Housing needs



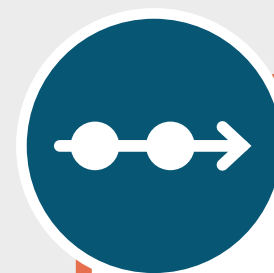
Tenure mix



Phasing and construction



Safety and security of open spaces



Masterplan evolution

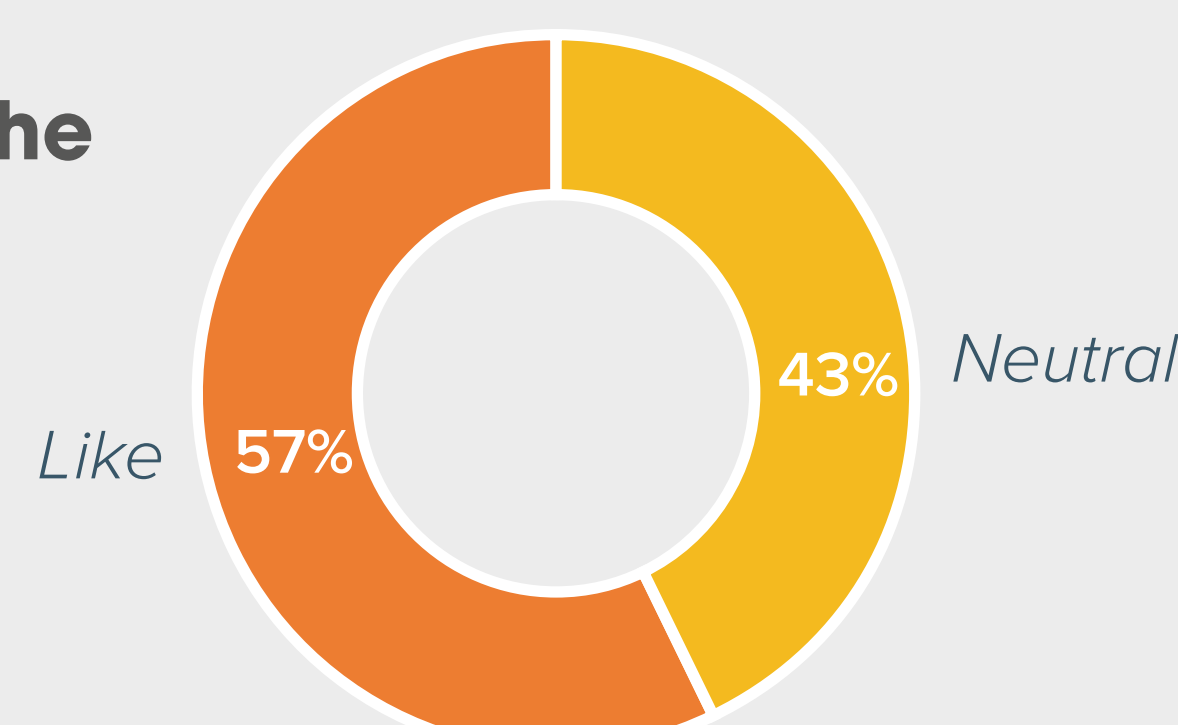


Traffic and congestion

YOU TOLD US



What do you think about the evolving masterplan?



What do you think about the proposed communal open spaces?

Most Popular



Communal Gardens



Civic Landscape

Least Popular



Multifunctional Spaces



What do you think about the following heritage features and building materials?

Most Popular



Murals



Grey Brick

Least Popular



Dark Red Brick

YOUR COMMENTS AND FEEDBACK

I like the prominent colour brick and artwork

The latest needs of residents need to be aligned

I like the ideas of local art to become part of the design

I really liked the stepping typology of the building

I really like the new open space – it feels more open

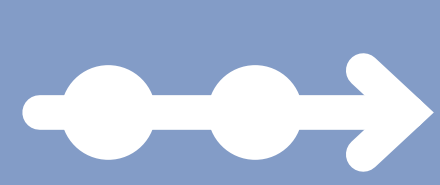
I like the shape of the special moment building – interesting move

Noticed new developments recently and these brick colours really stood out

PLEASE JOIN US AND GET INVOLVED!



JUNIPER CRESCENT



KEY UPDATES

WE ARE COMMITTED TO SUPPORTING YOU

We want your journey to a new home to be a success, and we are committed to supporting you both financially and by working with you every step of the way. You will be given the help and support you need with all moves; whether you want to stay on the estate, move to another home in Juniper Crescent, or leave Juniper Crescent, we will support you.

The dedicated One Housing regeneration team will help arrange everything from packers, movers and handy people.

Please see the A1 Rehousing Process Board for more information on the bidding, shortlisting and viewing process.

MOVING & REGISTRATIONS



36 ADULT CHILDREN REGISTERED



13 ADULT CHILDREN HAVE ACCEPTED PROPERTIES



24 HOUSEHOLDS HAVE MOVED

PLEASE ASK A MEMBER OF THE TEAM TODAY IF YOU HAVE ANY QUESTIONS!

UPCOMING DESIGN FREEZE & DOCUMENTS TO BE PRODUCED

The ‘design freeze’ is a key point in the project journey when the final design is approved. After this point, the below reports, plans and documents can all be produced.

A set of documents, plans and drawings will be produced to accompany the detailed planning application. This collection of information will provide details on the proposed development including: landscape and open space strategy, building heights, number of homes and their layout, car and cycle parking, access strategy, architectural quality and material palette.

DESIGN & ACCESS STATEMENT

A document which outlines the key design principles and strategies that have informed the proposals, including: the arrangement of buildings and open spaces, proposed heights, parking, access, servicing, materials, etc.

PLANS AND DRAWINGS

A collection of drawings which illustrate indicative landscape proposals, home layouts, building plans, elevations and sections.

TECHNICAL REPORTS

A collection of technical reports outlining how the proposed development will ensure a high quality living environment will be produced by specialist consultants.

PLANNING STATEMENT

Identifies the need for a proposed development within the context of the site. The statement also highlights how the proposed development accords with relevant planning policies.



Indicative list of technical reports to be produced:

- Sustainability and Energy Statement
- Planning Statement
- Daylight, Sunlight and Overshadowing Assessment
- Air Quality Statement
- Noise and Vibration Assessment
- Transport Statement
- Statement of Community Involvement
- Flood Risk Assessment and Drainage Strategy
- Townscape and Visual Impact Assessment
- Overheating Assessment
- Ecology Statement
- Financial Viability Statement
- Fire Statement
- Wind and Microclimate Assessment



JUNIPER CRESCENT

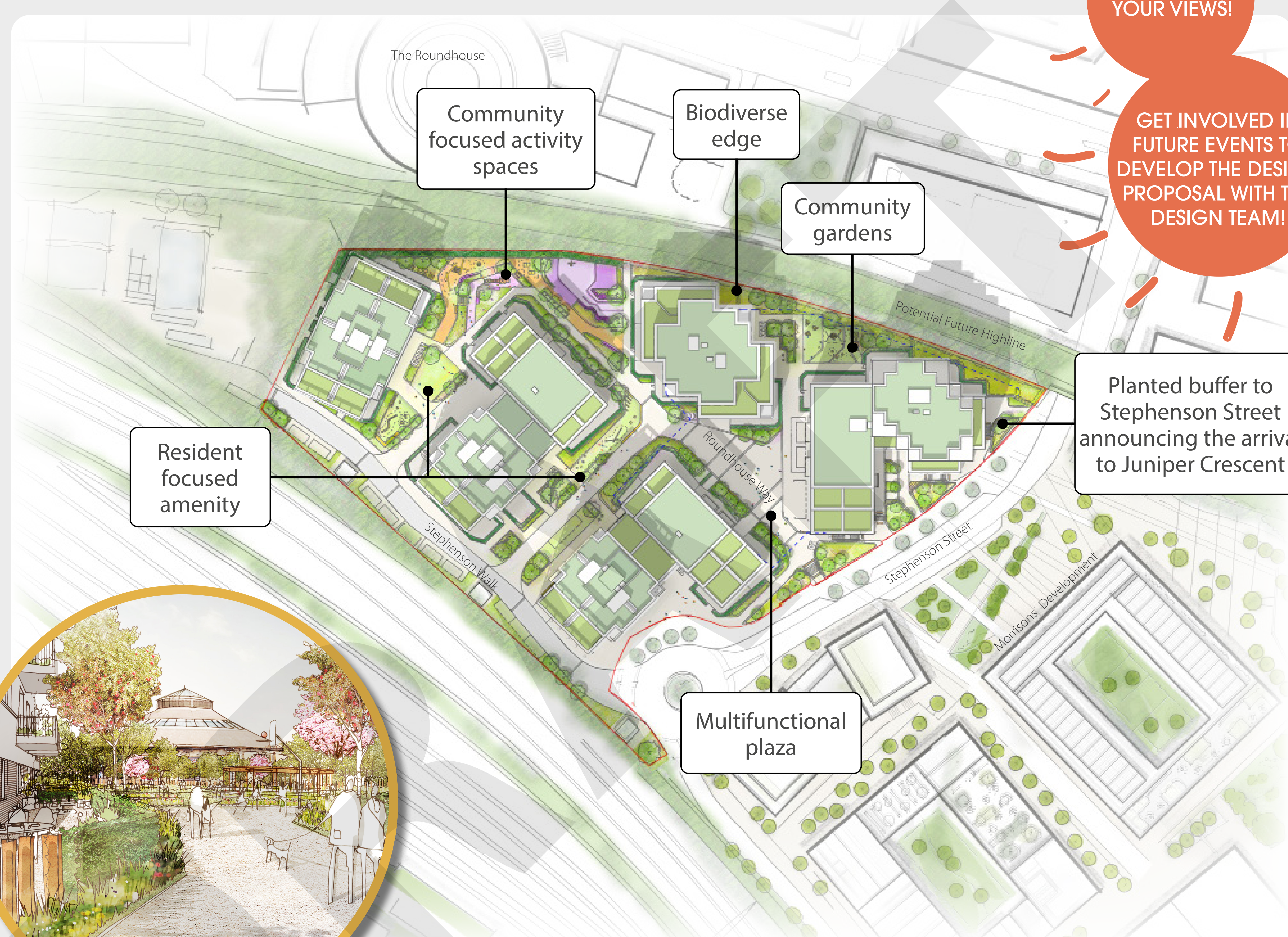


A SHARED VISION

The vision for the new Juniper Crescent neighbourhood is a shared one. You have helped us to understand what type of place Juniper Crescent should become and what it needs to achieve to be a success. You have told us that this shared vision should consider Juniper Crescent as a neighbourhood in its own right. A corner of Camden that is sheltered from the hustle and bustle but has its own distinctive feel.

The shared vision presented to you today is about building high-quality modern homes set in a vibrant green neighbourhood with beautiful spaces designed to provide a variety of vibrant spaces for people to socialise and relax.

THE MASTERPLAN



WE NEED YOUR VIEWS!

GET INVOLVED IN FUTURE EVENTS TO DEVELOP THE DESIGN PROPOSAL WITH THE DESIGN TEAM!

AERIAL VIEW OF THE MASTERPLAN VISION



JUNIPER CRESCENT



TODAY'S ACTIVITIES

Today we have prepared 2 workshop tables, each with a different activity which should take around 5-10 minutes to complete.
The aim is to rotate around the tables to take part in all activities.



KEY THEMES



LANDSCAPE & OPEN SPACES



HOME LAYOUTS



Come explore with us the proposed open spaces and public areas!



Come and take a look at the proposed home layouts and let us know what you think!

TABLE 1 INSTRUCTIONS

- 1 There are 3x A3 sheets with precedent images for the different key landscape elements on the masterplan. Please place a green sticker to highlight which precedent images you like and a red sticker for any images you dislike.

TABLE 2 INSTRUCTIONS

- 1 Please fill in your profile card with brief information about you and your household, so that we can better understand your lifestyle and personal needs.
- 2 Take a look at the booklet which contains different types of example home layouts for the proposed flats and duplexes. Precedent images and annotations have been used so that you can envision how your new home could look and feel. Please write down your opinions and feedback under the home layouts.



JUNIPER CRESCENT



FUTURE EVENTS AND PROGRAMME

JOIN US TO COLLABORATIVELY DESIGN THE FUTURE OF JUNIPER CRESCENT

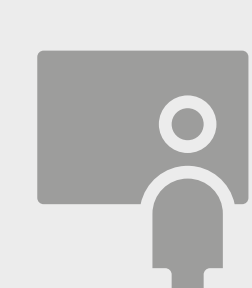
A big thank you to everyone who joined us at our previous events last year, we gained valuable feedback from you and we hope that everyone found these events useful and informative.

As we work our way towards planning submission for Juniper Crescent in Spring 2024, we would like to invite you to a series of engagement events to collaboratively design the proposals for Juniper Crescent.

We would like to invite you to a wide variety of events so that you can get involved throughout the planning application process. These will take place in the form of drop-in exhibitions and design feedback events. Below, an indicative programme timeline provides a summary of the key next engagement events.



PROGRAMME



JUNE 2023

INTRO EVENT

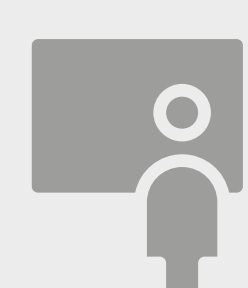
What happened since the Ballot and our next steps towards the **Full Planning Application**.

JULY 2023



EVENT 1: Workshops

Come and build the masterplan strategies in collaboration with the design team!
Workshop themes will cover open spaces, community uses and architecture.



SEPTEMBER 2023

EVENT 2: Design updates & feedback

Come along and drop-in the exhibition events!
You will see feedback from earlier workshop events and updated masterplan design and strategies.



DECEMBER 2023

FESTIVE EVENT: Resident-led family fun day

A festive themed event for all Juniper Crescent residents!
Activities such as playing with Reindeers, face painting, festive music and food.

JANUARY 2024



EVENT 3: Workshops

Participate in hands-on workshop activities to design the final masterplan!
Workshop topics will cover architectural and landscape details of the proposal.

SPRING 2024



EVENT 5: Design updates exhibition

Come see the final design proposals reflecting all design updates tested and key discussions held at earlier events.



SPRING 2024

FINAL EXHIBITION EVENT

Come along and take a look at the final design proposal and all supporting documents for the Full Planning Application.

WHERE WE ARE TODAY

PLEASE COME AND JOIN US!



PRP

One Housing



Countryside Partnerships

JUNIPER CRESCENT

>> NEXT STEPS

WHAT HAPPENS NEXT?

Following this workshop event, we will continue refining the masterplan and will be communicating with you regarding the upcoming design engagement events.

We invite you to take an active role in designing the future of Juniper Crescent with our design team.



HOW WOULD YOU LIKE TO BE KEPT INFORMED AND INVOLVED IN THE FUTURE?

KEEP INFORMED AND GET INVOLVED!

 **Drop-in exhibition events**

 **Workshop activities**

 **Newsletters**

 **Noticeboard posters**

 **Coffee mornings**

 **1-2-1 meetings**

 **WhatsApp group**

 **Email**

 **Website**



PLEASE USE THE STICKY NOTES PROVIDED TO LET US KNOW HOW YOU WOULD LIKE TO BE INFORMED:

WOULD YOU LIKE TO JOIN THE ESTATE BOARD?

As part of the regeneration, we have set up a Juniper Crescent Estate Board for the new development, consisting of residents, One Housing, Countryside and the project team.

 **AN OPPORTUNITY TO BE INVOLVED IN THE ONGOING MANAGEMENT OF THE ESTATE**

 **BE PART OF A FORUM AND HELP US DEVELOP THE ENGAGEMENT PROGRAMME**

 **ESTABLISH LOCAL PRIORITIES AND DEVELOP IDEAS**

 **PLAY A KEY ROLE IN MONITORING OUR COMMITMENTS**

JOIN THE ESTATE BOARD!
Speak to the team today

The board meet on the first Tuesday of every month, with flexibility to increase or decrease frequency when needed.

The next meeting is
Tuesday 6th February, 18:30 - 19:30
at Castlehaven Community Association!

SPEAK TO THE TEAM



Dan Heron
Development Manager
Countryside



Peter Blake
Head of Regeneration
One Housing



Raj Mandair
Regeneration Manager
One Housing



Mahbub Khandaker
Development Director
Countryside



Marina Cox
Regeneration Officer
One Housing



Nadine Landes
Urban Designer
PRP Architects



Matthew Marie
Regeneration Officer
One Housing



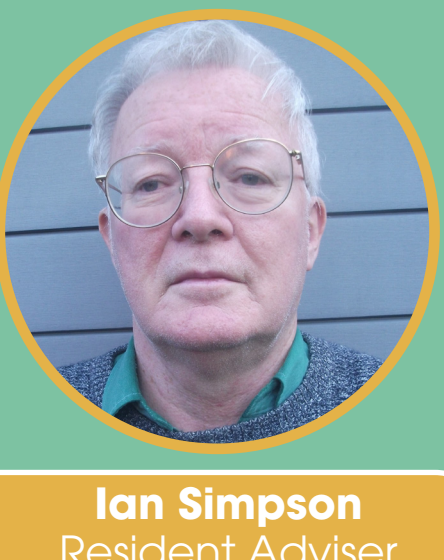
Roumpini Perakaki
Associate
PRP Architects



Alexandra Andone
Associate Director
PRP Architects



Steve Gair
Project Manager
One Housing



Ian Simpson
Resident Adviser
Communities First

If you would like a 1-1 confidential advice, please speak to Ian Simpson and the Communities First team.

Many members of the team are on hand today and are available to answer any questions that you may have.



JUNIPER CRESCENT